

Modular Containment

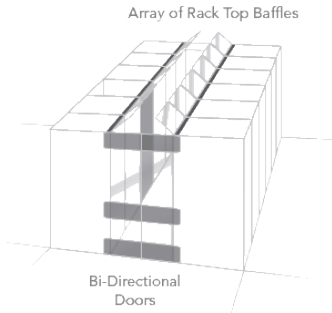
PC & PERIPHERALS
CLEANING & SANITIZING



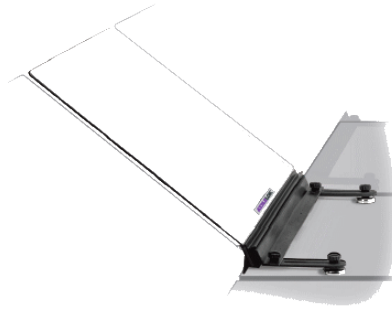
DATACENTER
AUDIT - ACCESSORIES
CLEANING & SANITIZING



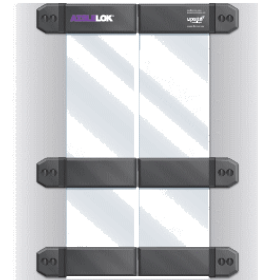
Introducing the industry's first modular containment solution



Sample Configuration



Rack Top Baffle



Bi-Directional Doors

An out-of-the-box containment solution that can be self-installed in minutes

Core benefits of containment with greater flexibility and value

- Allows for higher rack densities
- Enables lower inlet temperatures and reduced energy costs
- Lower initial cost and lower TCO than full containment
- Affordable to implement across multiple aisles

Easy installation

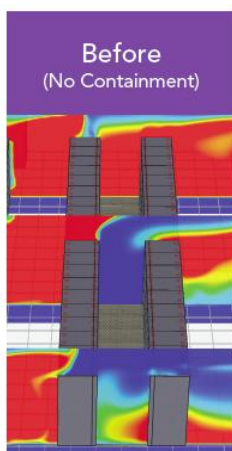
- Can be self-installed in minutes without the use of tools
- No construction means minimal disruption in computer room

Modular and flexible

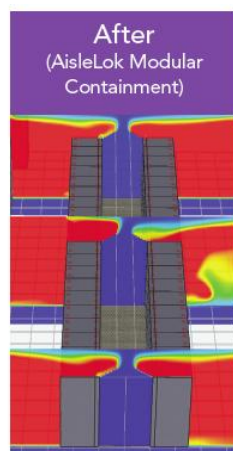
- Flexible design can be applied to hot or cold aisles
- Can be reconfigured quickly and easily
- Adapts to your computer room as it evolves

Available off-the-shelf

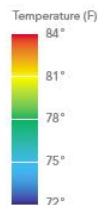
- Easy to order; no custom measuring required
- No 3rd party engineering, design, or installation required
- Ready to install out-of-the-box



CFD Analysis shows hot air recirculation into the cold aisle.



After AisleLok Modular Containment is installed, cold air is effectively contained, decreasing server inlet temps.

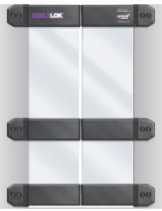


Modular Containment

PC & PERIPHERALS
CLEANING & SANITIZING

CERTIFIED PROVIDER
KoldProfile
Upsite technologies

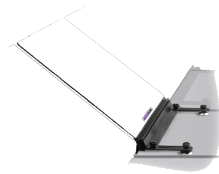
DATACENTER
AUDIT - ACCESSORIES
CLEANING & SANITIZING



Bi-Directional Doors

Bi-Directional Doors

- Made of clear polycarbonate
- Swinging doors attach to racks magnetically
- Available in varying heights



Rack Top Baffle

Rack Top Baffle

- Made of clear polycarbonate
- Attaches to top of rack magnetically
- Available in 30° angle, and 90° angle



Adjustable Rack Gap Panel

- Adjusts to fill in space between racks
- Attaches magnetically between two racks

Q & A

Q: When you say 'modular' containment, what does that mean?

A: Unlike hard and soft containment designs, which are customized to fit the current hot or cold aisle footprint and then permanently mounted around the aisle, the AisleLok Modular Containment solution offers complete flexibility to adapt to the current aisle configuration without hanging wires or bolting parts together. This means the modular containment design can grow with you as you need to make changes to computer room configuration.

Q: How does AisleLok Modular Containment compare to other containment solutions on the market?

A: There are many hard wall containment and soft curtain containment products on the market. These products typically require a complex process, with a 3rd party required to measure, quote, design, customize, and install the products. These products build a fixed sealing barrier around the IT cabinets to control airflow. CFD analysis conducted by 3rd parties, as well as Upsite's own field research, has shown that AisleLok Modular Containment solution can achieve similar core benefits of traditional containment — such as reduced inlet temperatures, energy savings, and increased rack densities — but without the costs or inconveniences that accompany the current containment options. The major benefit of AisleLok Modular Containment is its ability to attain a similar level of efficacy with a simple and cost-effective design.

Q: How can AisleLok Modular Containment reduce my operating costs?

A: AisleLok Modular Containment creates an environment where substantial cost reductions can be realized through changes to cooling set points and reduction of conditioned air flow volumes (e.g. turning off fan motors or reducing fan speeds for units with variable frequency drives (VFD)). Cost saving benefits that result from installation of AisleLok Modular Containment can ripple throughout the entire cooling infrastructure through changes to other systems such as raising chilled water set points, increasing both water and air side economizer hours, etc.

Q: How are AisleLok Modular Containment products installed?

A: AisleLok Modular Containment products attach to server racks directly with magnets. One Rack Top Baffle attaches to the top of each rack, and Bi-Directional Doors (consisting of a LH and RH pair, much like a saloon door) attach to the rack's side panels at the end of the aisle.

designed and
manufactured by
upsite
technologies®